

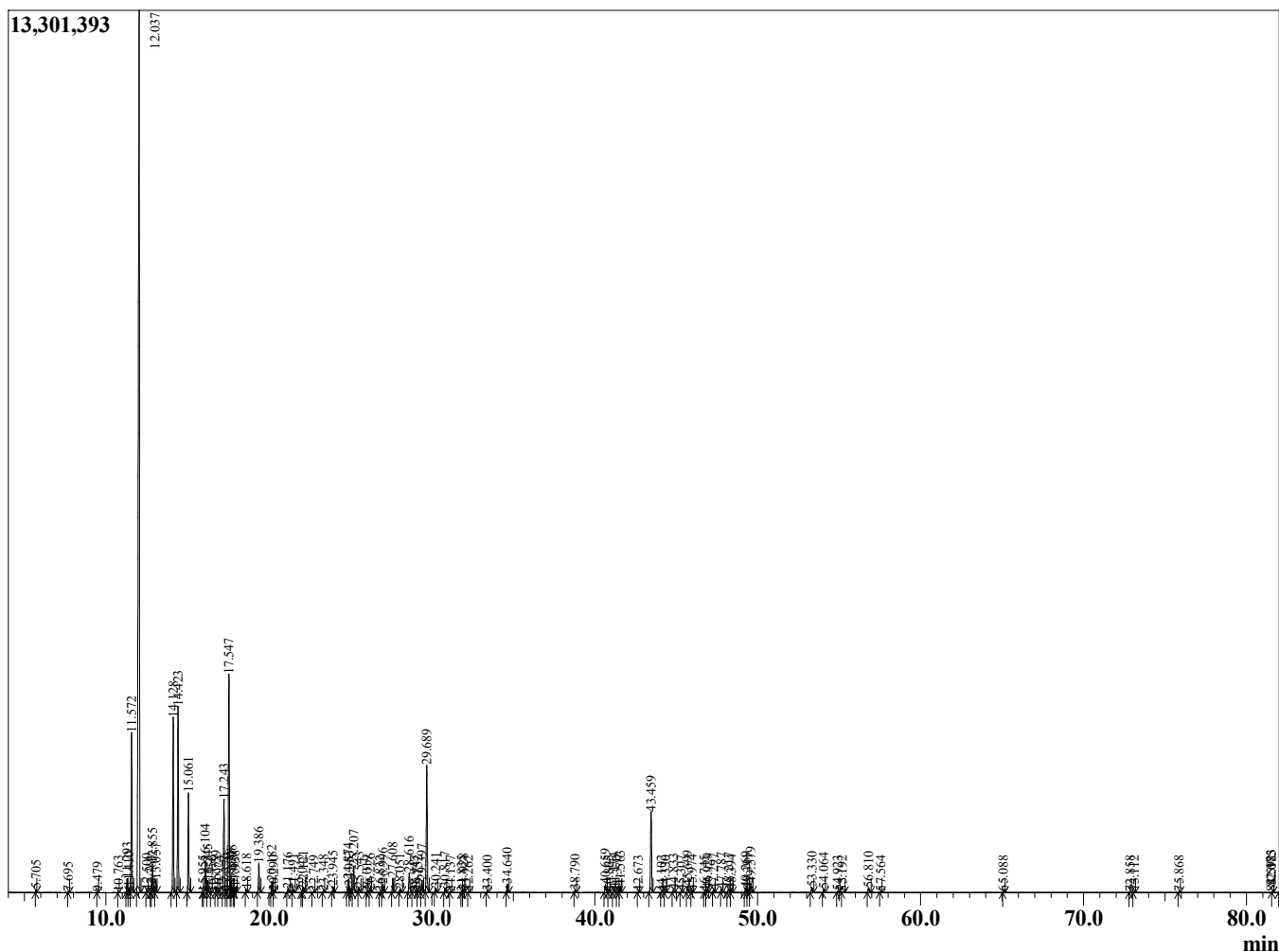
Sample Information

Sample Type : Essential Oil  
 Sample Name : Boswellia carterii  
 Injection Volume : 0.10

Frankincense Carterii Premium  
 Lot# SOW6-WE  
 Country: Somalia



Chromatogram Boswellia carterii



R.Time	Name	Peak Report TIC	Area%
5.705	Toluene		0.06
7.695	Unidentified		0.02
9.479	1-Ethyl-1,4-cyclohexadiene		0.02
10.763	2,6-Dimethyl-4-octene		0.02
11.293	Hashishene		0.42
11.410	Tricyclene		0.15
11.572	alpha-Thujene		5.14
12.037	alpha-Pinene		42.20
12.500	Thujadiene isomer		0.08
12.763	alpha-Fenchene		0.03
12.855	Camphene		0.87
13.057	Thuja-2,4(10)-diene		0.39
14.128	Sabinene		5.96
14.423	beta-Pinene		6.22
15.061	Myrcene		3.24
15.955	Pseudolimonene		0.03
16.104	alpha-Phellandrene		1.18
16.245	delta-3-Carene		0.43
16.456	Hexyl acetate		0.02
16.759	alpha-Trpinene		0.18
16.924	ortho-Cymene		0.02
17.243	para-Cymene		3.19
17.370	Octyl methyl ether		0.11
17.547	Limonene		8.08
17.638	beta-Phellandrene		0.22
17.708	1,8-Cineole		0.37
17.865	meta-Cymene		0.03
17.938	cis-beta-Ocimene		0.20
18.618	trans-beta-Ocimene		0.10
19.386	gamma-Terpinene		1.05
20.182	Octanol		0.41
20.290	Pinol		0.03
21.176	Terpinolene		0.16
21.491	para-Cymenene		0.12
22.042	Perillene		0.06
22.121	Linalool		0.21
22.749	Unidentified		0.04
23.348	beta-Thujone		0.05
23.945	alpha-Campholenal		0.21
24.874	trans-Pinocarveol		0.53
24.953	cis-Verbenol		0.21
25.207	trans-Verbenol		1.05
25.543	Unidentified		0.15
26.019	Sabina ketone		0.02
26.226	Pinocamphone		0.08
26.832	Unidentified		0.04
26.996	para-Mentha-1,5-dien-8-ol		0.32
27.608	Terpinen-4-ol		0.54
28.051	para-Cymen-8-ol		0.12
28.616	alpha-Terpineol		0.89
28.947	cis-Piperitol		0.07
29.152	alpha-Phellandrene epoxide		0.04
29.397	Verbenone		0.46
29.689	Octyl acetate		5.04
30.241	trans-Carveol		0.16
30.817	Decyl methyl ether		0.19

R.Time	Name	Area%
31.137	cis-Carveol	0.03
31.835	Cuminal	0.03
31.928	Carvone	0.10
32.262	Carvotanacetone	0.03
33.400	3,5-Dimethoxytoluene	0.05
34.640	Bornyl acetate	0.34
38.790	alpha-Cubebene	0.09
40.659	alpha-Copaene	0.35
40.865	Geranyl acetate	0.03
41.174	beta-Bourbonene	0.16
41.370	Hexyl hexanoate	0.05
41.563	beta-Elemene	0.25
42.673	alpha-Gurjunene	0.05
43.459	beta-Caryophyllene	3.60
44.102	beta-Copaene	0.03
44.330	trans-alpha-Bergamotene	0.04
44.833	Guaia-6,9-diene	0.11
45.307	Cadina-3,5-diene	0.05
45.699	alpha-Humulene	0.26
45.974	Alloaromadendrene	0.08
46.745	10-beta-H-Cadina-1(6),4-diene	0.04
46.929	trans-Cadina-1(6),4-diene	0.14
47.297	Germacrene D	0.11
47.787	beta-Selinene	0.14
48.217	alpha-Selinene	0.17
48.394	alpha-Murolene	0.08
49.269	gamma-Cadinene	0.20
49.391	Cubebol	0.12
49.579	delta-Cadinene	0.38
53.330	Caryophyllene oxide	0.23
54.064	Viridiflorol	0.15
54.923	Unidentified	0.08
55.192	Unidentified	0.06
56.810	tau-Cadinol	0.22
57.564	Unidentified	0.03
65.088	Phellandrene dimer	0.04
72.858	meta-Camphorene	0.03
73.112	Cembrene A isomer	0.05
75.868	Verticilla-4(20),7,11-triene	0.03
81.592	Cembrenol	0.02
82.075	Incensole	0.23
82.183	Serratol	0.33
82.932	Incensyl acetate	0.16
		100.00